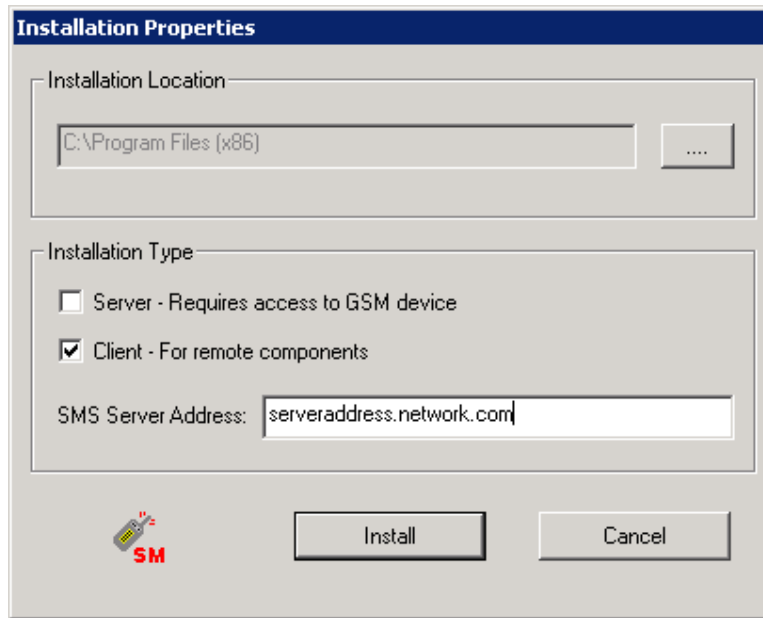


Installation of SysManSMS ALERT Server on SCOM 2012

Install the server (preferred) or client components on the SCOM Server

Follow the SysManSMS Server Install Guide for details on setup and test.

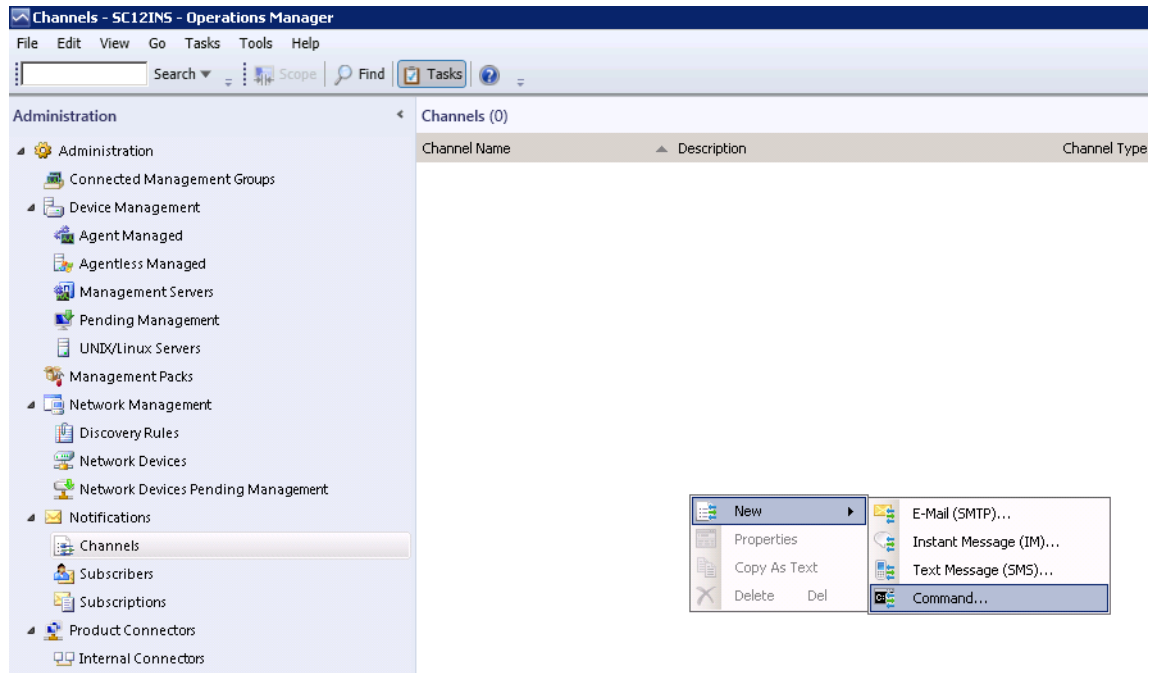


Note: After installing your SysManSMS as a Client (or Server) on your OpsMgr machine, you may test sending a sms from a command line window before continuing to OpsMgr setup.

See the SysManSMS Install Guide on how to send/receive your first sms.

Now go to SCOM - OpsMgr

Create a Channel



Select *Command...* and NOT *Text Message (SMS)*...

Command Notification Channel

Command Notification Channel

Description

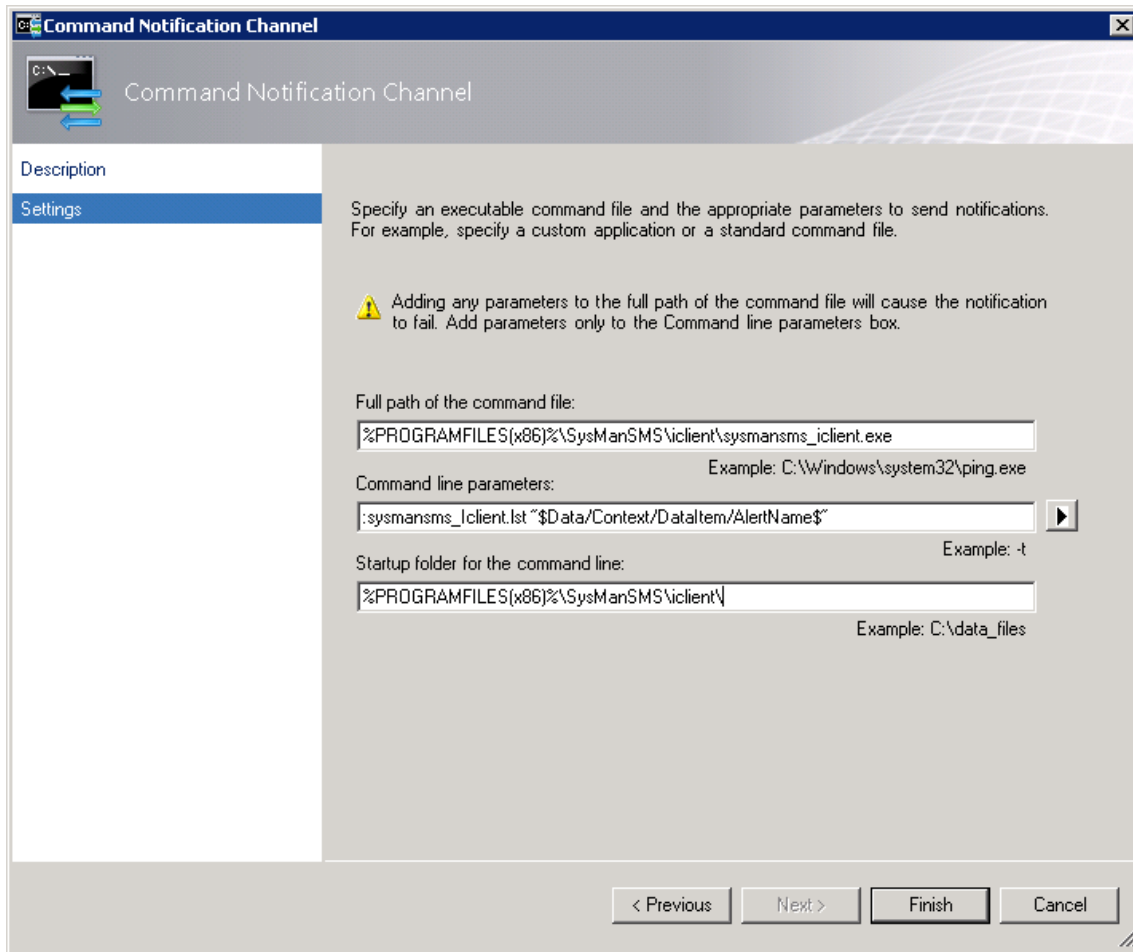
Settings

Provide a name and description for this channel that will make it easy to identify later.

Channel name:

Description (optional):

< Previous **Next >** Finish Cancel



Call the SysManSMS_iclient.exe and pass the following parameters (maximum 10):

:sysmansms_iclient.lst

Number File with the recipient numbers

You specify a Number File starting with 1 colon

(Edit with Number Editor or from WinClient)

Note:

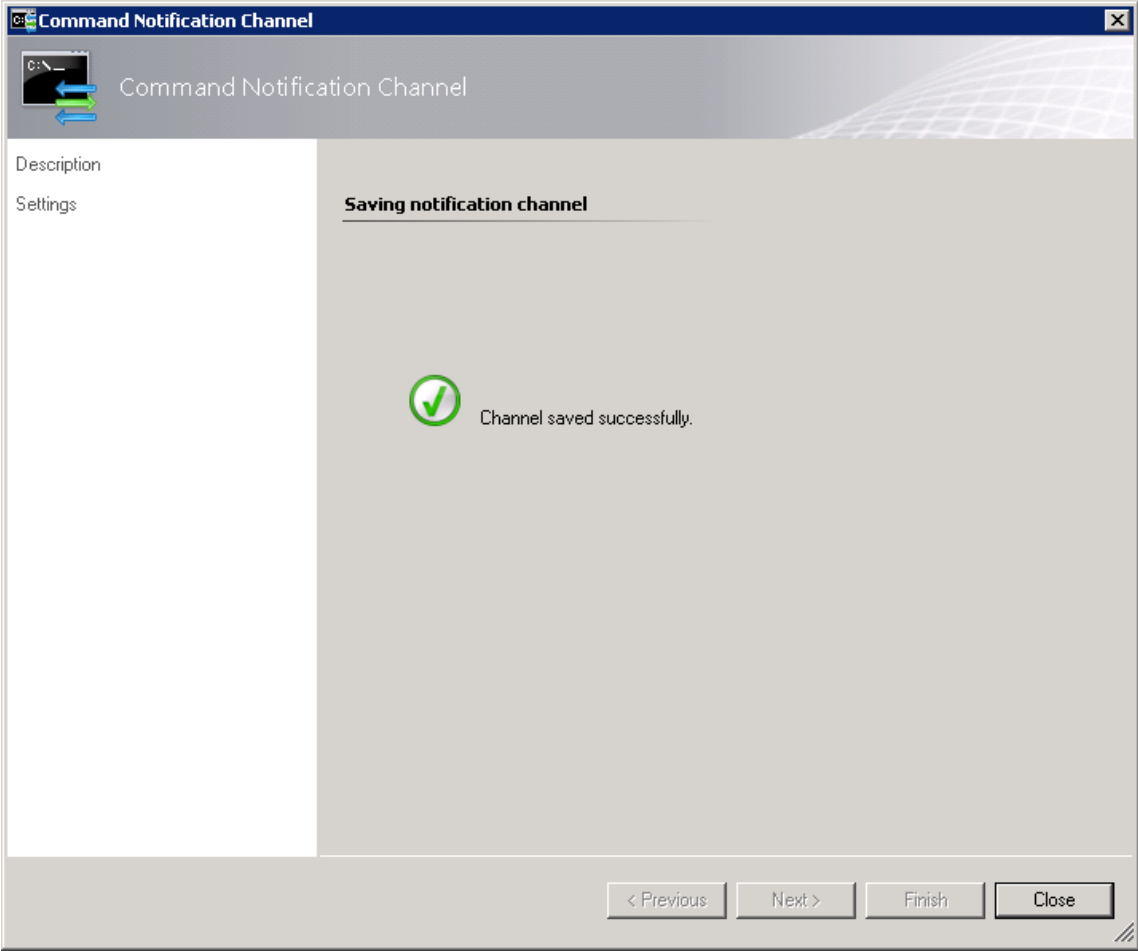
You may create as many Number Files you like.

The SysManSMS_iclient.lst is the default one.

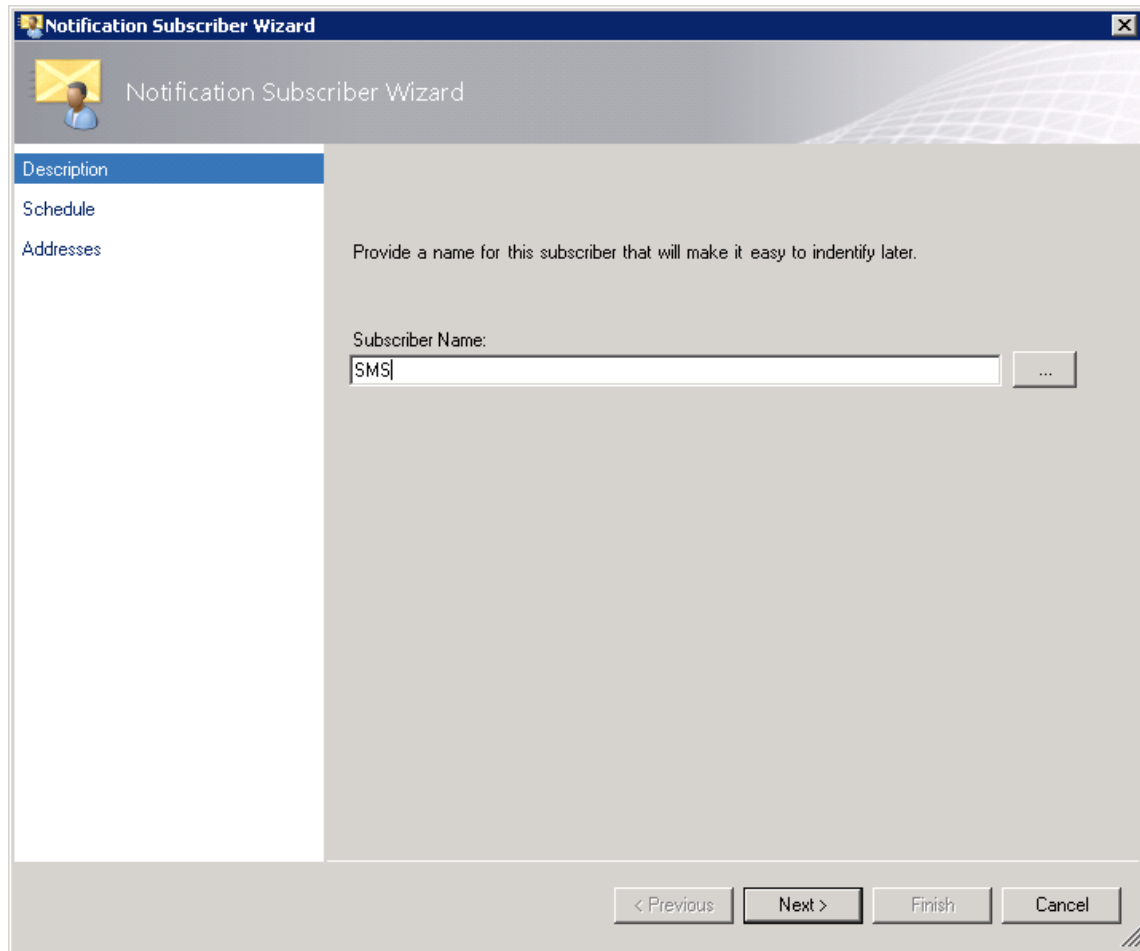
If you use Number Files on Server, start with 2 colons

“\$Data/Context/DataItem/AlertName\$”

Text that will be passed (you may test with a fixed text)



Create a new subscriber




The image shows a screenshot of a Windows-style dialog box titled "Notification Subscriber Wizard". The window has a blue title bar with a close button (X) in the top right corner. Below the title bar is a header area with a yellow envelope icon and a person icon, followed by the text "Notification Subscriber Wizard".

On the left side, there is a vertical list of steps: "Description" (highlighted in blue), "Schedule", and "Addresses".

The main content area contains the following text: "Provide a name for this subscriber that will make it easy to identify later." Below this text is a label "Subscriber Name:" followed by a text input field containing the text "SMS". To the right of the input field is a small button with three dots "...".

At the bottom of the dialog box, there are four buttons: "< Previous", "Next >", "Finish", and "Cancel".

Notification Subscriber Wizard [X]

 **Schedule Notifications**

Description

Schedule

Addresses

Set the master schedule for notifying the person. Notification schedules can be further customized for each subscriber address.

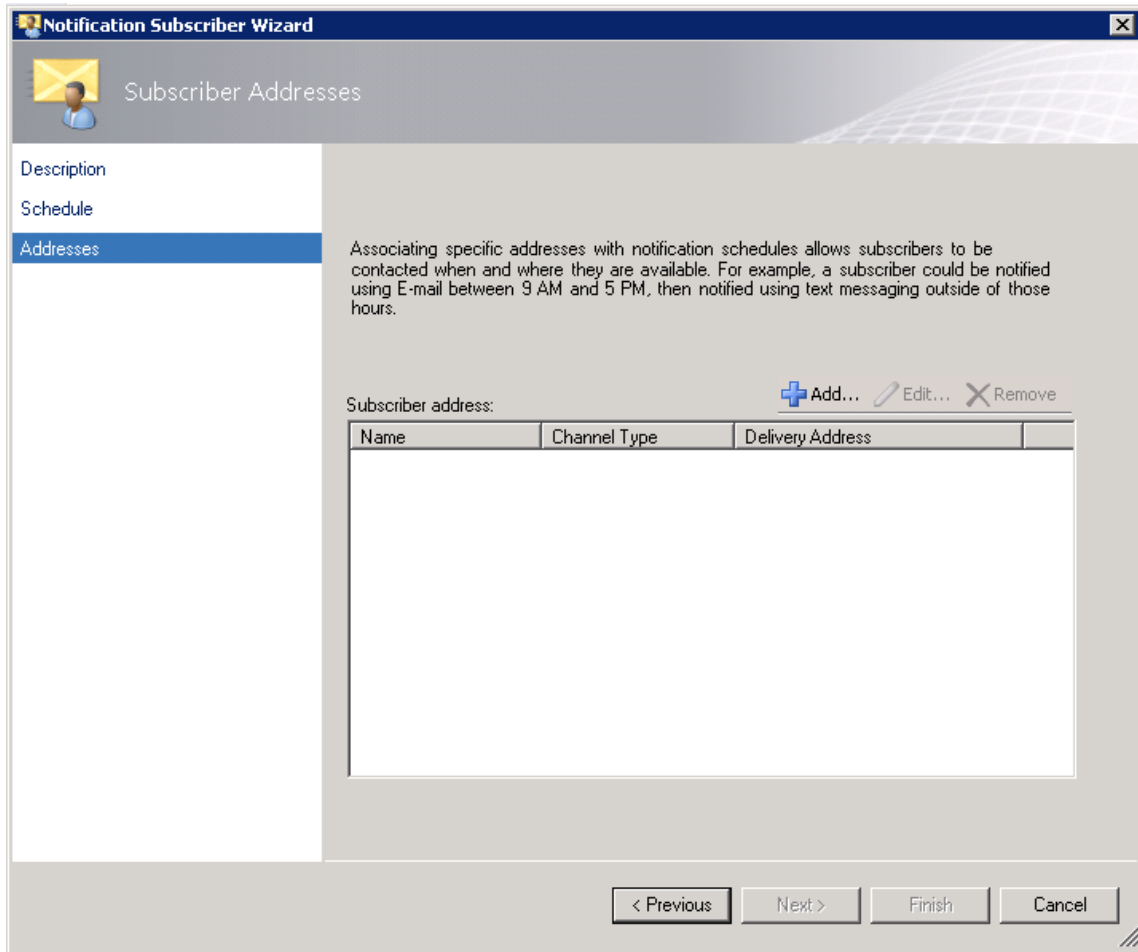
Always send notifications

Notify only during the specified times:

Schedules to send: + Add... ✎ Edit... ✕ Remove...


Date Range	Time Range	Weekdays	

< Previous Next > Finish Cancel



Add an address

Subscriber Address [Close]

 Describe the Subscriber Address

General

Channel

Schedule

Provide a name that will make it easy to identify this subscriber address later.
For example, Home e-mail address.

Address name:


< Previous

Next >

Finish

Cancel

Subscriber Address [Close]

 Provide the Channel and Delivery Address

General
Channel
Schedule

Select the notification channel and enter your address for that channel


Channel Type
Command

Command Channel
SMS with SysMan

Delivery address for the selected channel:
[Empty text box]

< Previous Next > Finish Cancel

Subscriber Address [X]

 Schedule Notifications

General
Channel
Schedule

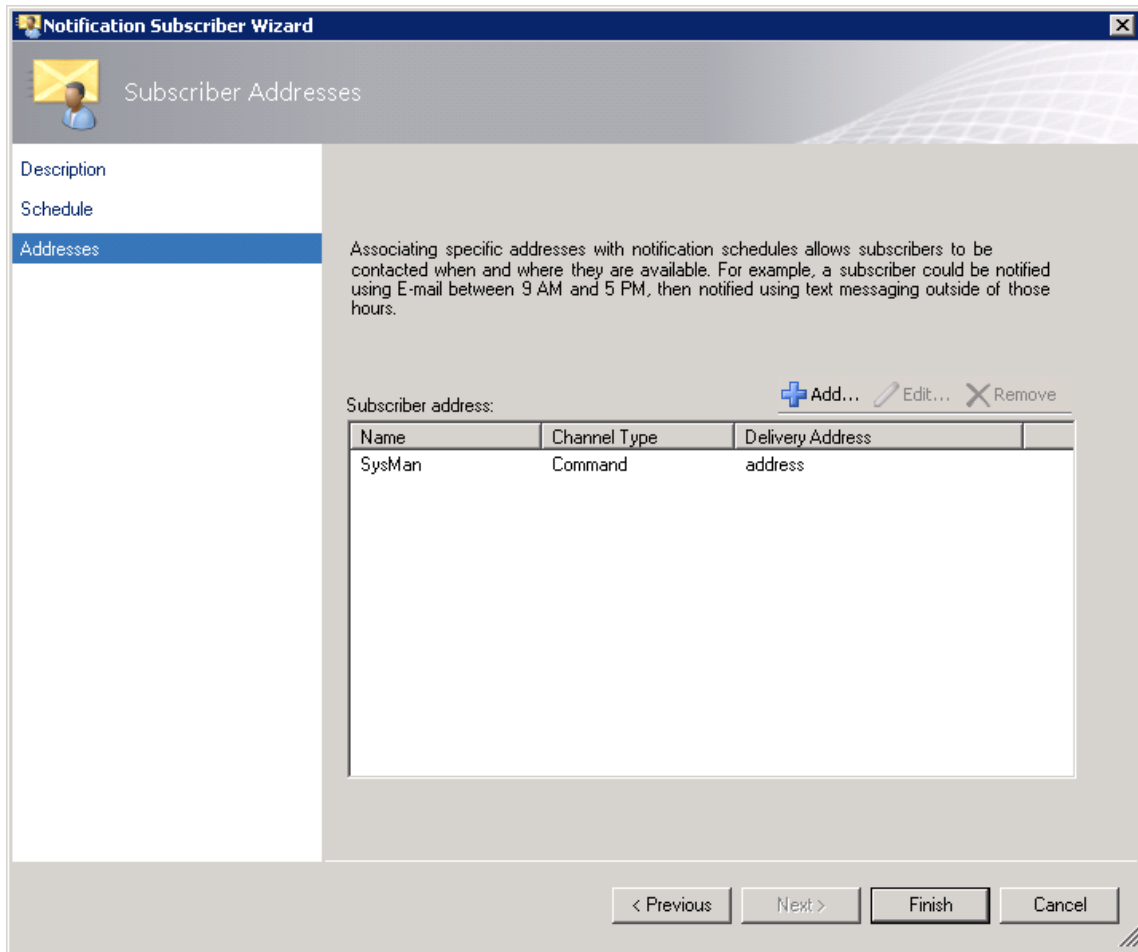
Set the schedule for receiving notifications at this subscriber address.

Always send notifications
 Only send notification during the specified times:

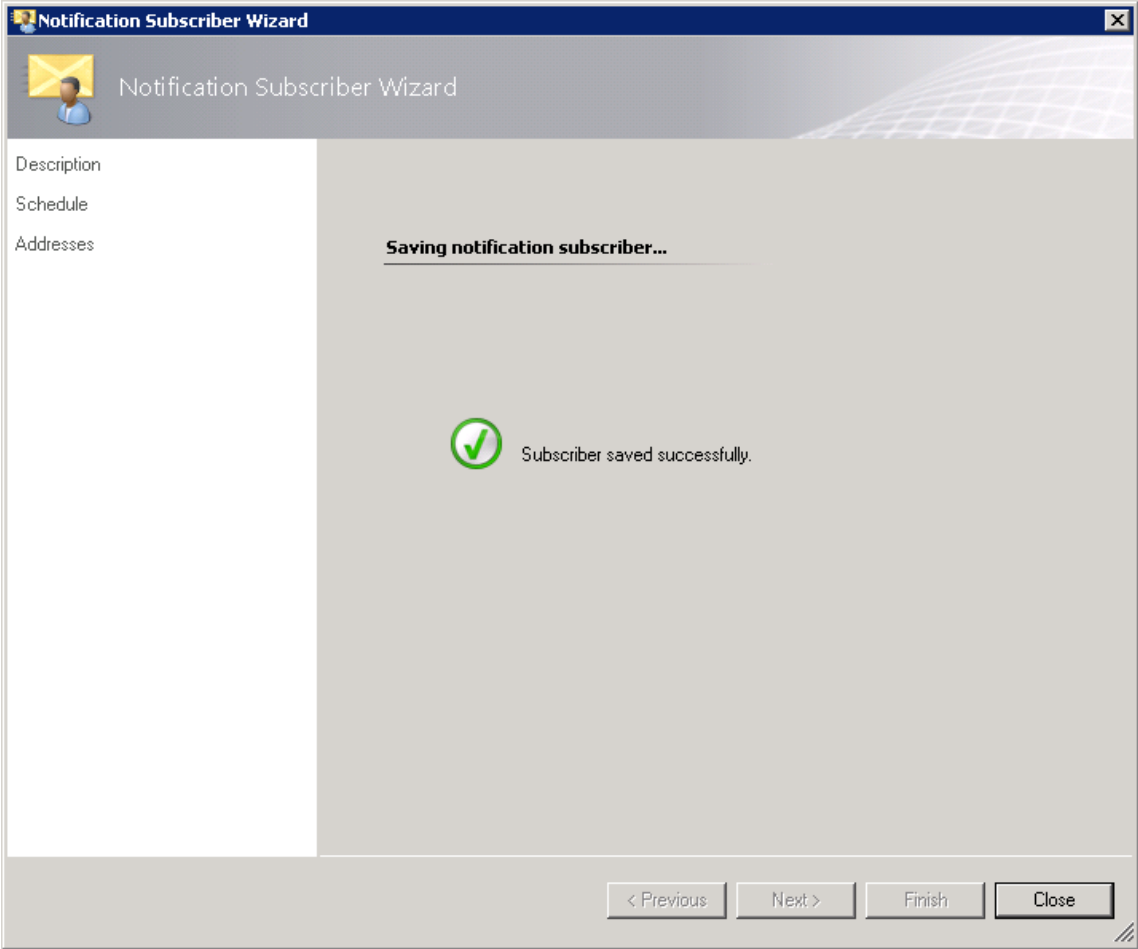
Scheduled periods: + Add ✎ Edit X Remove

Date Range	Time Range	Weekdays	

< Previous Next > Finish Cancel



The 'address' text is a dummy that has not to be entered...



Create one or more subscribers

The screenshot shows a window titled "Notification Subscription Wizard" with a sub-header "Create Notification Subscription". On the left is a navigation pane with "Description" selected, and other options: "Criteria", "Subscribers", "Channels", and "Summary". The main area contains the instruction "Provide a name and description for this subscription, and add the recipients." Below this are two input fields: "Subscription name:" with the text "Critical Errors to SMS" and "Description:" with the text "Send SMS if critical errors occur". At the bottom right are four buttons: "< Previous", "Next >", "Finish", and "Cancel".

Notification Subscription Wizard

Create Notification Subscription

Description

Criteria

Subscribers

Channels

Summary

Provide a name and description for this subscription, and add the recipients.

Subscription name:

Critical Errors to SMS

Description:

Send SMS if critical errors occur

< Previous Next > Finish Cancel

Notification Subscription Wizard

Criteria

Description

Criteria

Subscribers

Channels

Summary

Subscription Criteria

When alerts are generated for the objects that match the criteria specified below, notifications will be sent to specified subscribers.

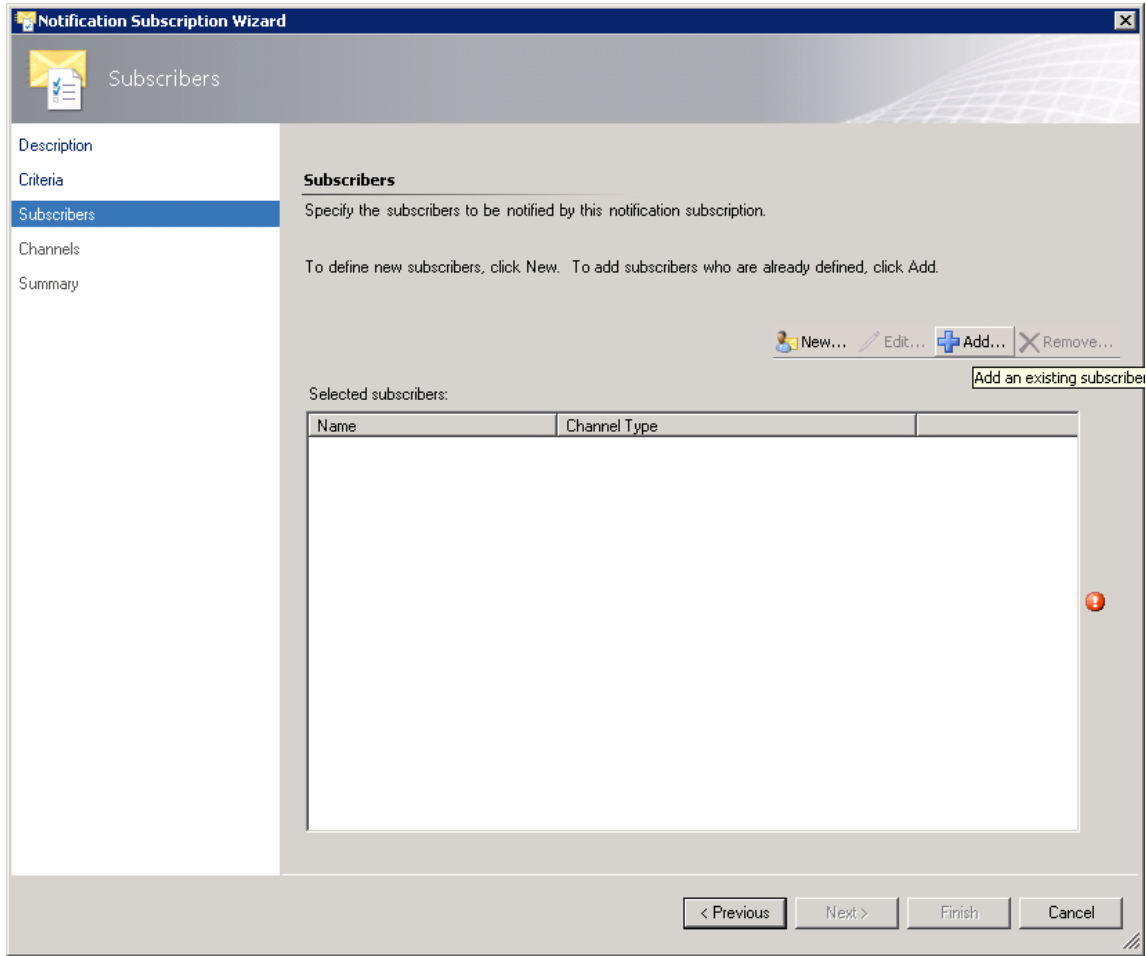
Conditions

- raised by any instance in a specific group
- raised by any instance of a specific class
- created by specific rules or monitors (e.g., sources)
- raised by an instance with a specific name
- of a specific severity
- of a specific priority
- with specific resolution state
- with a specific name
- with specific text in the description
- created in specific time period

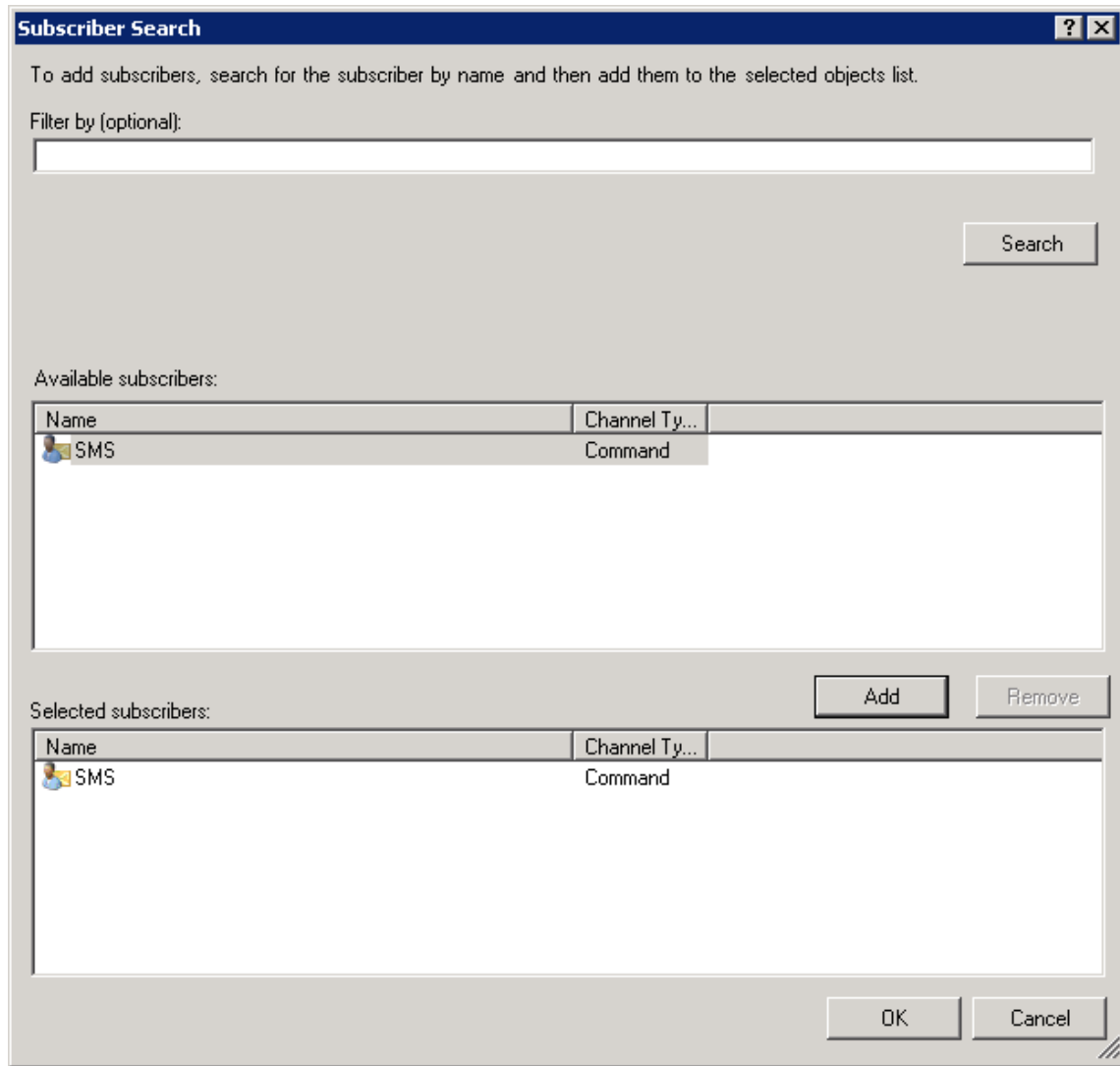
Criteria description (click the underlined value to edit):

Notify on all alerts
of a Critical severity
and with New (0) resolution state

< Previous Next > Finish Cancel



Add a subscriber



Just click on search, the previously created SMS subscriber will appear and can be selected

Notification Subscription Wizard

Subscribers

Description

Criteria

Subscribers

Channels

Summary

Subscribers

Specify the subscribers to be notified by this notification subscription.

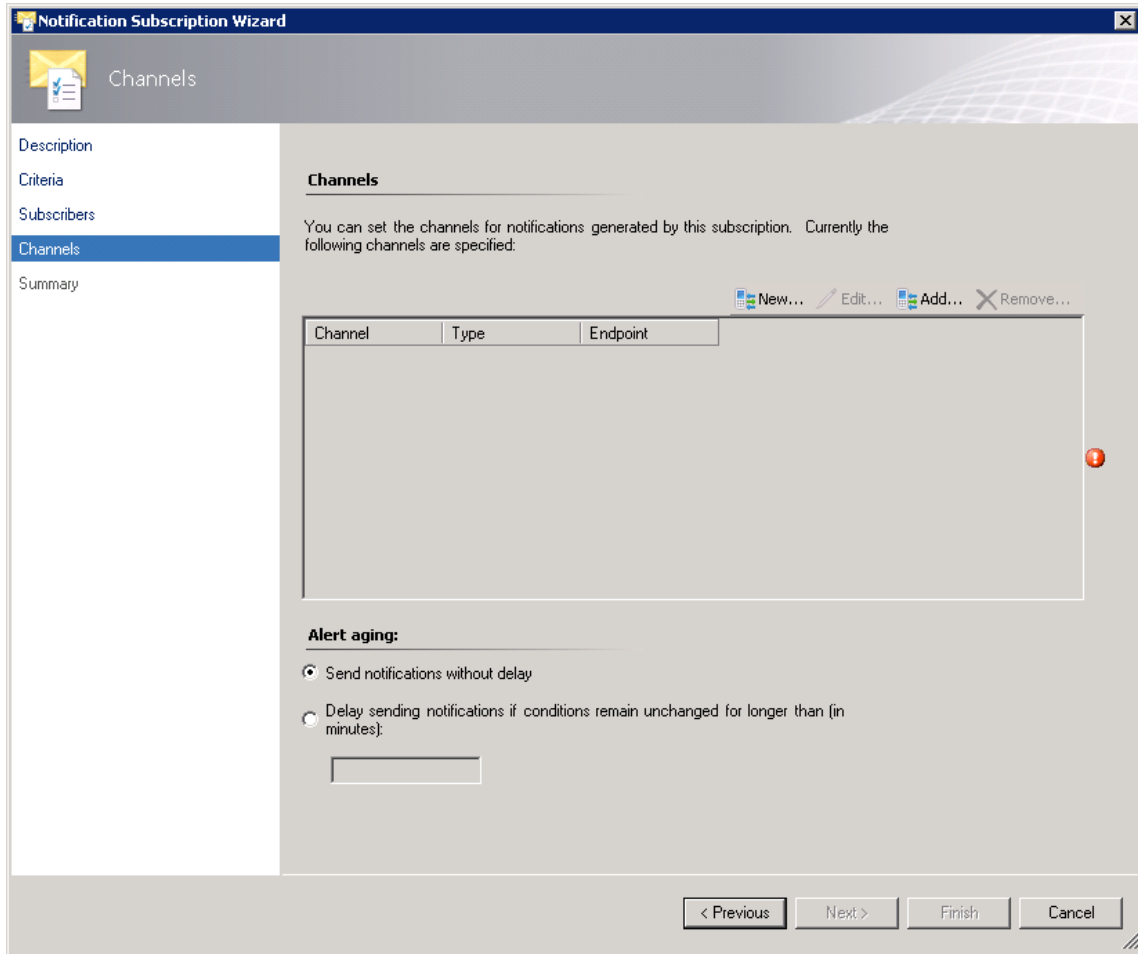
To define new subscribers, click New. To add subscribers who are already defined, click Add.

New... Edit... Add... Remove...

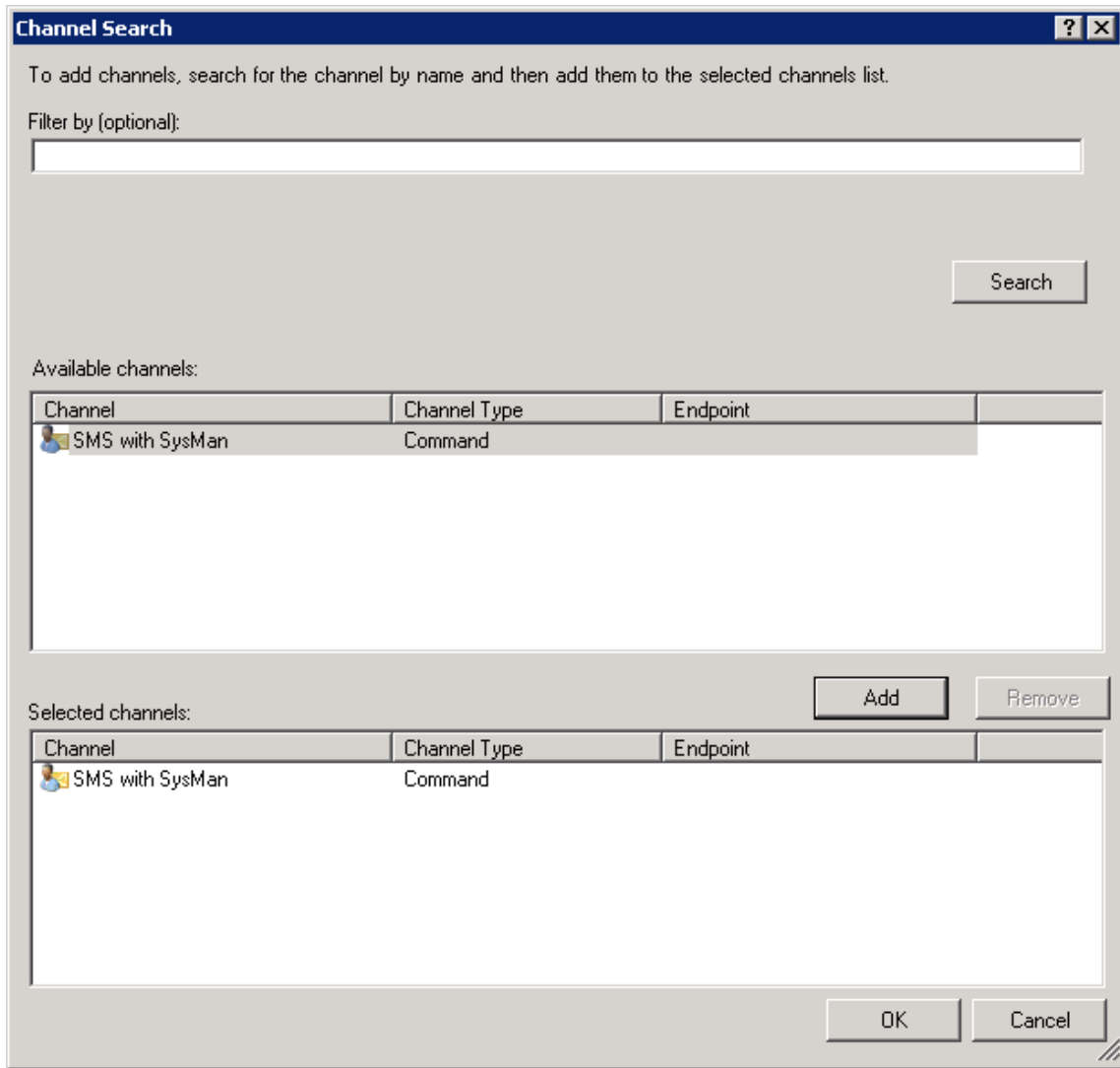
Selected subscribers:

Name	Channel Type
SMS	Command

< Previous Next > Finish Cancel



Add a channel



Just click on search, the previously created SMS channel will appear and can be selected

Notification Subscription Wizard

Channels

Description

Criteria

Subscribers

Channels

Summary

Channels

You can set the channels for notifications generated by this subscription. Currently the following channels are specified:

New... Edit... Add... Remove...

Channel	Type	Endpoint
SMS with SysMan	Command	

Alert aging:

Send notifications without delay

Delay sending notifications if conditions remain unchanged for longer than (in minutes):

< Previous Next > Finish Cancel

Notification Subscription Wizard

Summary

Description

Criteria

Subscribers

Channels

Summary

Confirm notification subscription settings

Name
Critical Errors to SMS

Description
Send SMS if critical errors occur

Criteria
Notify on all alerts where
of a Critical severity
and with New (0) resolution state

Subscribers
SMS

Channels
SMS with SysMan

Enable this notification subscription

< Previous Next > Finish Cancel

