

Add a secure mobile messaging service to your e-mail environment

SysManSMS Server

with

Microsoft Exchange and Outlook

Covers how to:

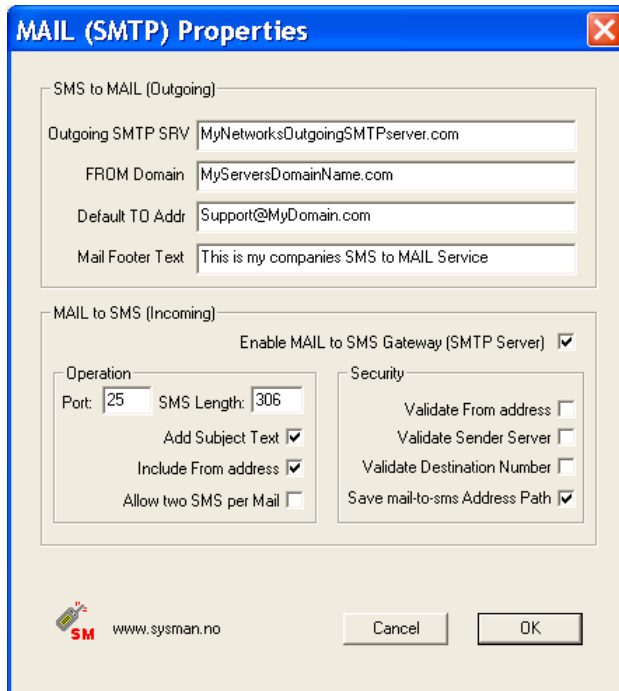
- Setup your environment
- Test your SysManSMS Server
- Forward MAIL to any mobile using SMS
- Reply back with SMS to MAIL functionality
- Create an SMS notification rule from Subject text
- Use SysManSMS Server as Exchange 2003 as AUTD notify

The High quality MAIL-SMS-MAIL solution:

- Highly Secure internet-free solution using direct GSM connection
- Easy integration with Exchange and mail; two-way capabilities
- Send messages from mail client's – receive replies in INBOX
- Support for sms delivery report – receive delivery status mail
- Text Filters limit, convert or priorities sending of messages
- Dual-server support with auto failover and re-send
- Number Files to define mobiles and schedules
- Remotely control Services and Programs
- Monitor Exchange – alert if stops
- Watchdog to monitor Server

Inside SysManSMS Server - define SMTP and mail settings

SysManSMS Server has a SMTP Server (Windows Service) that can receive mails from “any” client. As soon as the smtp server is enabled, it will forward any e-mail request to the SysManSMS Server. SysManSMS Server will then forward the text to the given destination mobile number(s) as SMS's. Received SMS messages can be sent back to a mail address by invoking the send mail utility SM.



To change SMTP (Mail) settings, open SysManSMS desktop menu and select *Server Settings* and then *Configure Settings*

Alternatively run SETUP from CD

SMS to MAIL settings will configure how the Send Mail (SM.EXE utility) will forward incoming sms's to e-mails

MAIL to SMS settings will configure How the secure SMTP server will receive and handle incoming mails to be forwarded as SMS to mobiles.

Outgoing SMTP SRV

FROM Domain
Default TO Addr

Mail Footer Text

This address is your networks smtp address. To be used by SM.EXE Specify your sms server's domain name. (sms.mycompany.com) If SM utility can't resolve any mail address, you can setup at default mail address to receive such messages. This is the text banner to be displayed at end of mail messages.

Enable MAIL to SMS Gateway Gateway

Port Number
SMS Length
Add Subject Text
Include From address
Allow two SMS per Mail

This will tell SysManSMS Server to start the SMTP Service This is the smtp listening port. Default is 25 This will specify the maximum length of one mail-sms message Subject text from the mail will start the SMS text The mail sender's address will be added to end of SMS text If text greater than maximum, this will allow split into 2 SMS's

Validate From address

Validate Sender Server

Validate Destination Number

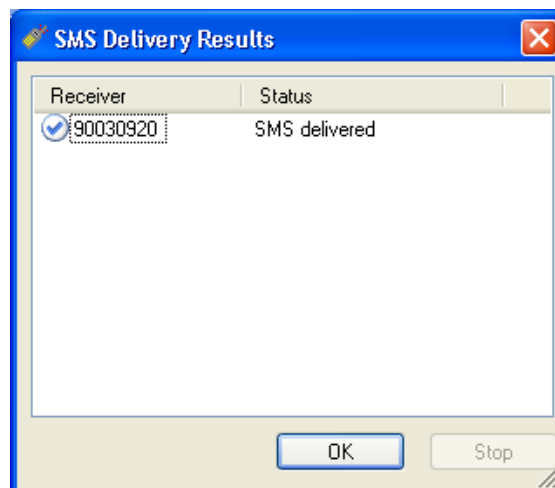
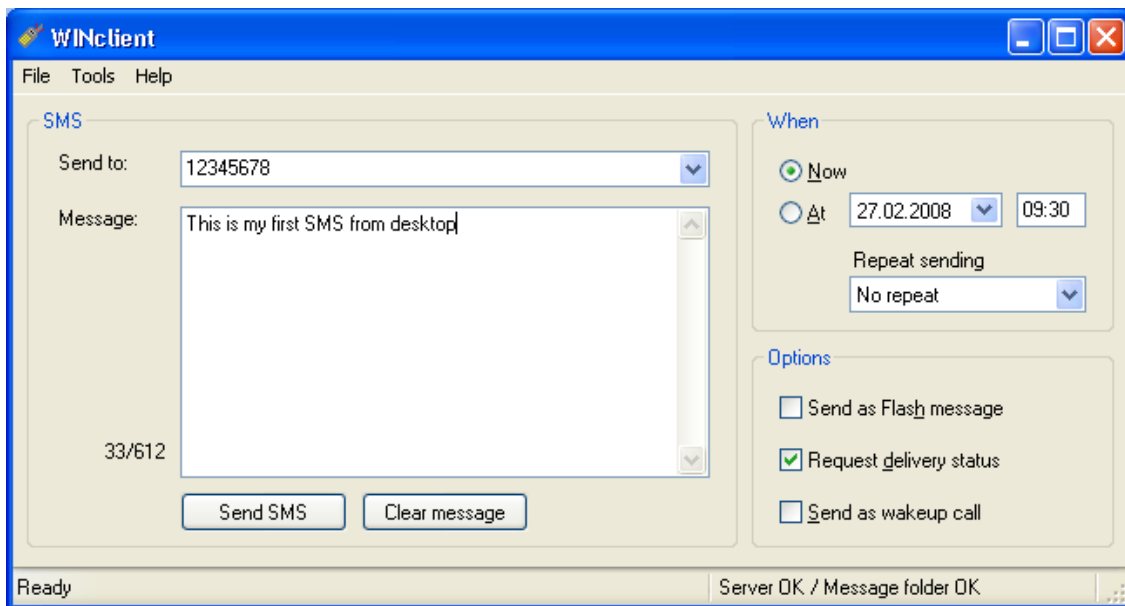
Save mail-to-sms Address Path

If text file SMTPfrom.sec exist in SMTP folder, the senders address must be listed in the file. If not, this is a security stop. If text file SMTPsender.sec exist in SMTP folder, the sender's mail server must be listed in the file. If not, this is a security stop. If text file SMTPdestination.sec exist in SMTP folder, the destination mobile number must be listed in the file. When enabled, the smtp server will store the sender's mail path in a register file for the REST OF CURRENT DATE. This information can then within the same date be used by the SM (Send Mail) utility to resolve a return mail address.

Checkout the SysManSMS Server functionality

Before you continue with your mail setup, it's a good idea to check the send SMS capability of your SysManSMS installation. To do this we will use the desktop client WINclient.

Activate WINclient from SysManSMS Desktop Menu or by double-click on the file SysManSMS_WINclient.exe in WINclient folder



WINclient is also capable of sending messages to mobiles listed in a Number File. To get access to the Number Files, use the right arrow in the "Send to:" field.

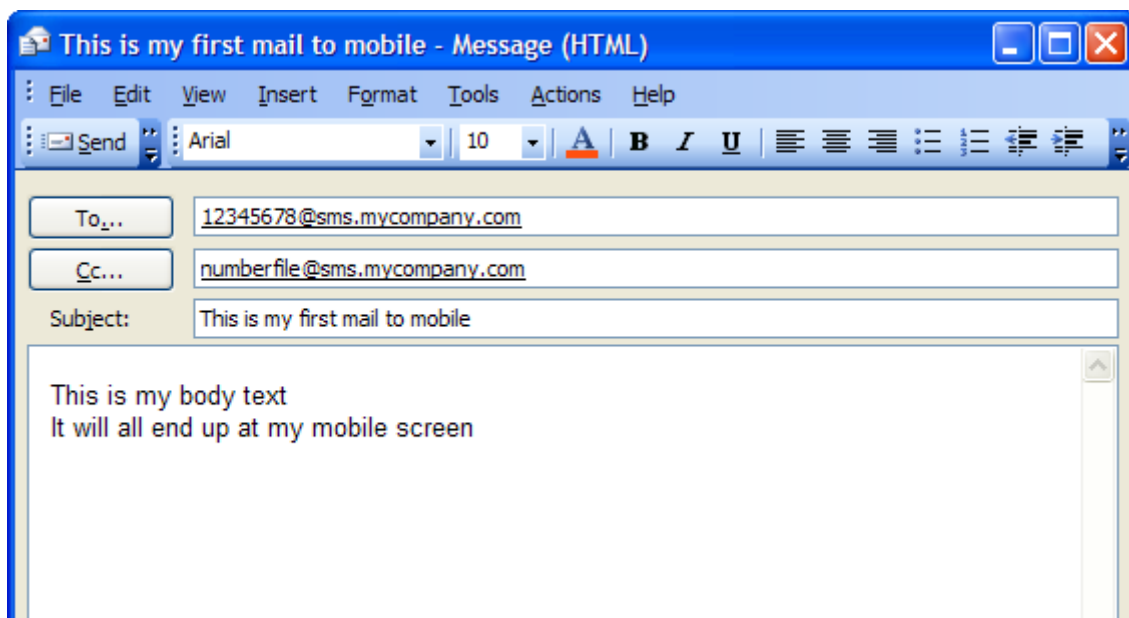
Forward MAIL to SMS

After you have enabled the SMTP Server and defined your settings (see above), you are now ready to send e-mails to be forwarded to mobiles as secure SMS messages.

You can send mails from many of the common mail client programs. The destination address may be a single mobile number, a SysManSMS Number File (located in the Iclient folder) or a mailing list from your mail client (Outlook or other). The basic format is mobilenumber@sms.mycompany.com.

The SMTP server will receive the mails and decode the content. It will then send the SMS text message via the SysManSMS Server to the destination number(s) specified. Multiple mail copies to Numbers and/or Number Files are supported.

IMPORTANT: To address the SMTP Server, you may need to create a DNS subnet (sub domain) for the SMTP server's machine. Also if your network has a mail gateway (Microsoft Exchange or other) you may need to direct mails not to go out to the Internet, but instead be delivered locally.



The following mail send formats and modifications are valid:

- MobileNumber@smtpserver Will send to the specified mobile number
The number can be any number, including international prefixed numbers (“+” in front)
- MobileNumber.F@smtpserver Will send to the specified mobile number using SMS Flash message type
- MobileNumber.C@smtpserver Will send to the specified mobile number, and a delivery Confirmation MAIL is returned
- MobileNumber.S@smtpserver Will send SUBJECT text only. Apply to both Numbers or Number Files
- MobileNumber.D@smtpserver Will DIAL the specified number (WakeupCall)
- MobileNumber.R@smtpserver Will write senders reply path information to SM.EXE lookup Database file
- NumberFile@smtpserver Will send to all numbers in the NumberFile.lst located in the SysManSMS Iclient folder
- Step_File@smtpserver Will send with delay between messages to all numbers in step_file.lst in Iclient folder
- sms@smtpserver Will take the mobile number from the mail's Subject field

Note:

The F,C,S and D flags is not needed if you send to Number Files, as this specification will be done for each individual number, inside the Number File itself.

Forward SMS to Mail

SysManSMS Server support received SMS messages to be forwarded to a mail address in 3 ways. The send mail program is called SMStoMAIL.EXE and can be found in the *Programs* folder.

For easier usage, a copy of SMStoMAIL.exe exists, and is called SM.EXE

You can now have the Send Mail (Example SM.EXE) program started by sending a SMS like this:

```
SM mymailaccount@mycompany.com This is the text from my mobile
```

Another more powerful function is to return a SMS to a mail user and let the SysManSMS Server try to resolve the return address automatically.

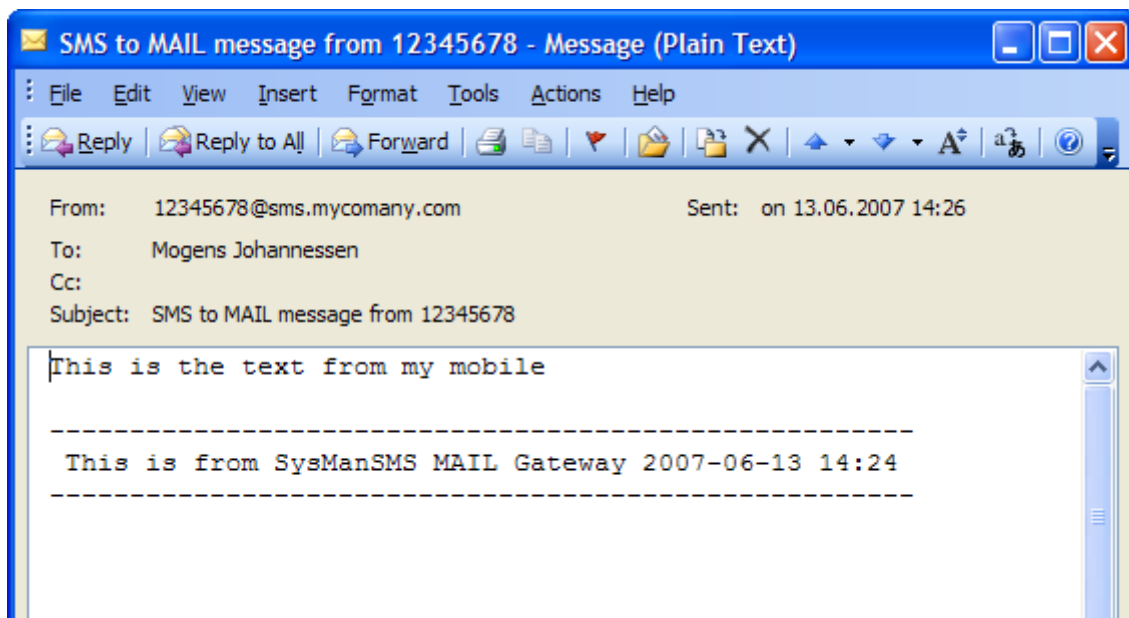
For the SysManSMS Server to be able resolve a mail address, you must enable the "Save Mail-to-SMS Address Path" function in the SMTP (Mail) setup of the server. (See above)

```
SM This is the text from my mobile
```

If you then in addition make SM.EXE in the *Programs* Folder of the Server to be your default program (copy SMStoMAIL.EXE to DEFAULT.EXE) you will just have to return a SMS to the mail account:

```
This is the text from my mobile
```

At your mail client's INBOX you should very soon see your mobile message as a "New Mail"

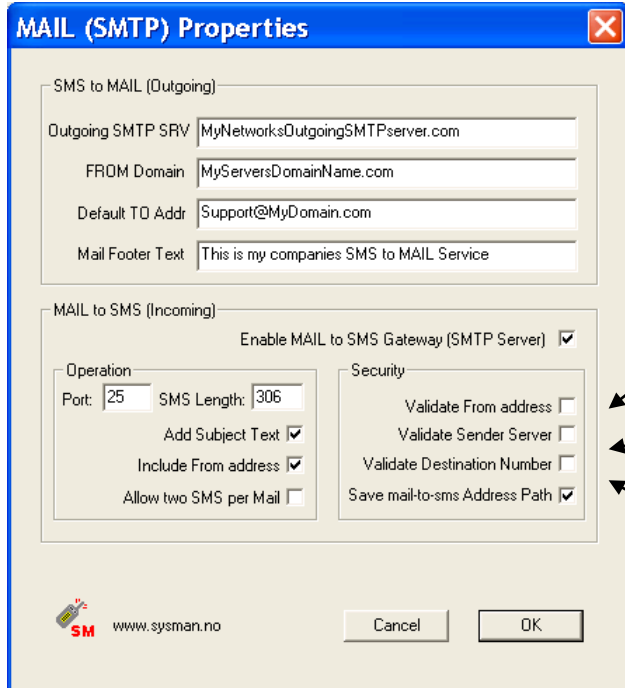


If you now like to reply back to the mobile, just use the normal reply button and send the text !

Controlling SECURITY for the MAIL-to-SMS functions

The SysMan SMTP Server has 3 mechanisms that can be used to control the access and usage. You turn this on/off via the SMTP Setup screen in SysManSMS Server Configuration utility.

Note: If changed, re-start the server.



Will check against listed mail addresses in the file SMTPfrom.sec in SMTP folder

Will check against listed computer names or IP addresses in the file SMTPsender.sec in SMTP folder

Will check against listed mobile numbers in the file SMTPdestination.sec in SMTP folder

Example of security files:

SMTPfrom.sec:

```
! This is the FROM address security file
me@mycomputer.com
sales@marketing.mycompany.com
per.larson@marketing.mycompany.com
```

SMTPsender.sec:

```
! This is the SENDER name/address security file
mycomputer.com
workstation.mycompany.com
192.168.0.123
```

SMTPdestination.sec:

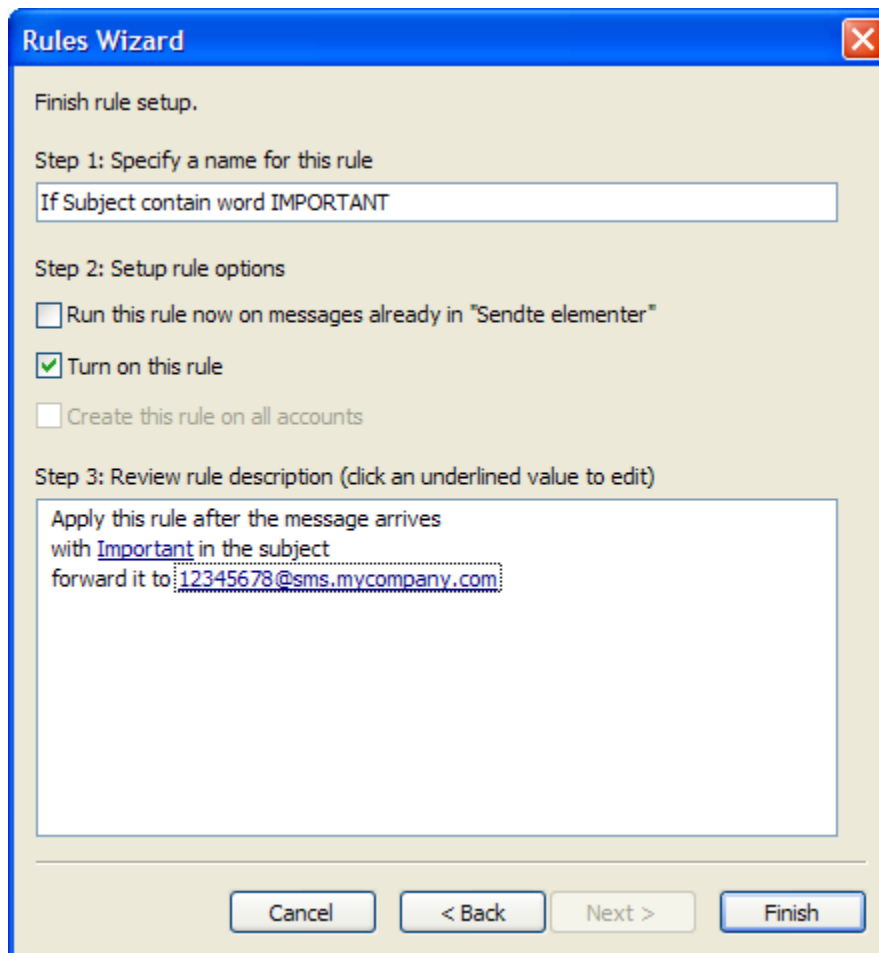
```
! This is the DESTINATION mobile numbers security file
12345678
+4712345678
+449876543210
```

NOTE: All 3 files can be edited with a standard plain text editor (Notepad)

Setup Outlook to notify your mobile if specific mail arrives

You can very easy setup your Outlook e-mail client (or your Exchange Server) to send you an alert as SMS message, if a specific mail with a specific subject text should arrive in your INBOX.

To setup such a task, use the Rule and Alert Wizard from your Outlook's Tools menu:



More advanced rules

The above rule is a simple example on how such a task can be set up. With the SysManSMS Server installed on your PC/Server, you can make more advanced rules to start a program instead of just forwarding the current mail. If you start `...\\SysManSMS\\Iclient\\SysManSMS_Iclient.exe` you may configure Iclient's parameters to select the text you like, and use the Number File you like.

Another way would be to create a rule to start a script. Such a script could just write a file to the SysManSMS Server's INPUT folder, and it will then automatically be sent to people listed in the Number File with the same name as the text file, or to your default Iclient Number File.

For more details and ideas on how to send SMS's – see the SysManSMS User Guide.

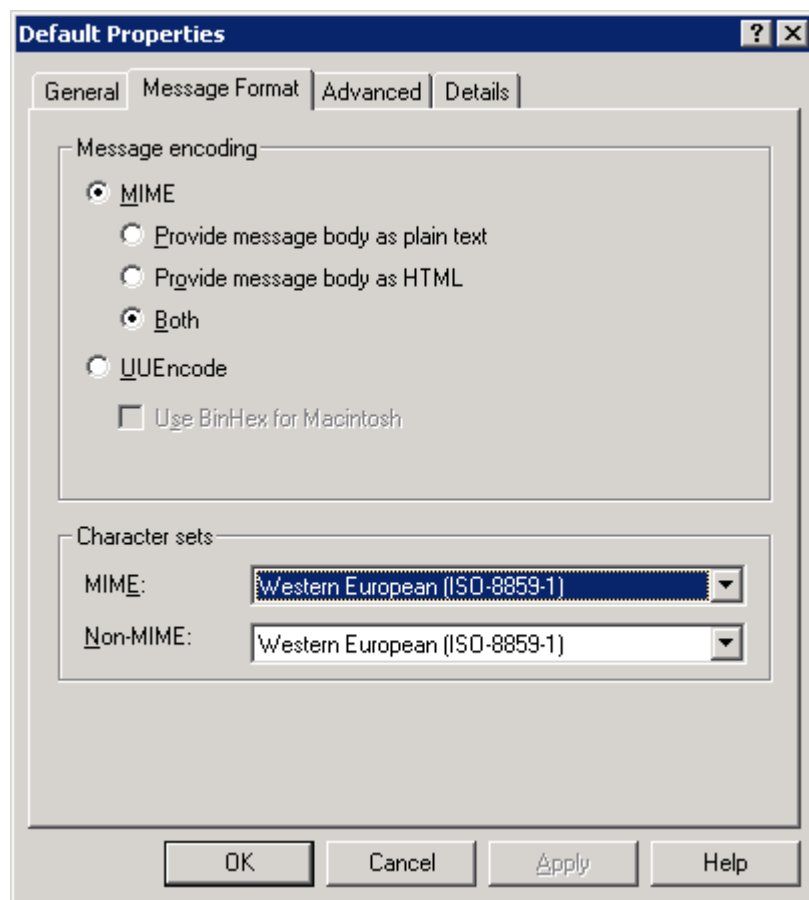
Exchange Server Character set and Encoding setting

Exchange Server can be setup to send e-mails using different text formats and character sets.

SysManSMS Server's SMTP module will handle most standard settings and support both 'Quoted-Printable' and 'Base64' encoding.

If you have problems reading your mobile SMS text, forwarded from Exchange Server's, you may check your default settings of *Message Format* in the *Internet Message Formats* properties of your Exchange Server.

The following picture shows default Western European settings for Exchange Server 2003:



Exchange Server Manager Properties